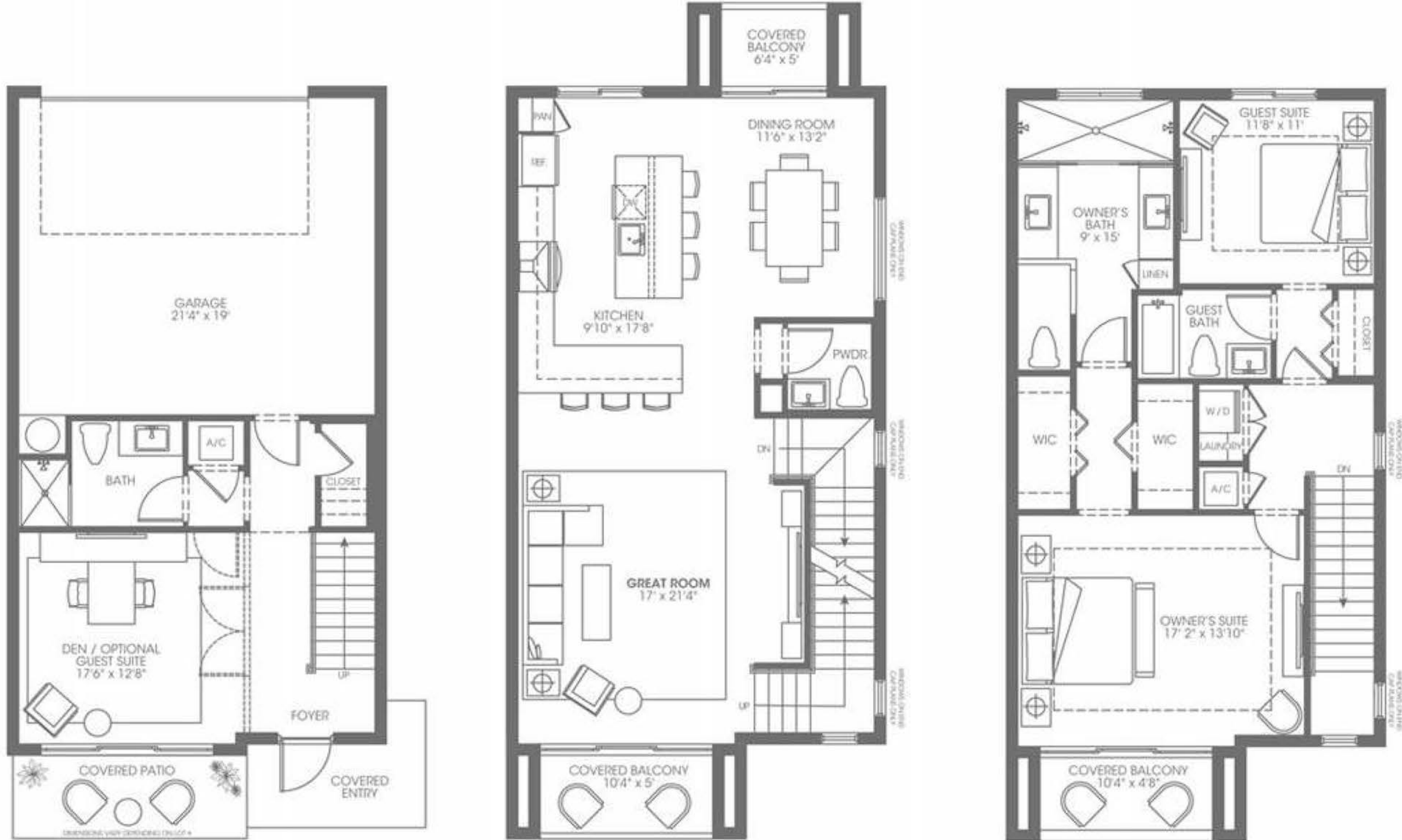


# PLAN ONE

2 Bedrooms | Convertible Den | 3.5 Baths

A/C Living Area		
Level 1	435 sf	40 m <sup>2</sup>
Level 2	875 sf	81 m <sup>2</sup>
Level 3	818 sf	76 m <sup>2</sup>
<b>Total Living Area</b>	<b>2,128 sf</b>	<b>200 m<sup>2</sup></b>

Covered Entry	60 sf	6 m <sup>2</sup>
Garage	440 sf	41 m <sup>2</sup>
Covered Patio	70 sf	6 m <sup>2</sup>
Balconies	192 sf	18 m <sup>2</sup>
<b>Total Area</b>	<b>2,890 sf</b>	<b>269 m<sup>2</sup></b>



All dimensions are approximate. This floorplan is subject to change without notice. There are various methods of calculating the total square footage of a residence, and depending on the method of calculation, the quoted square footage of a residence may vary. The total square footages as shown in this brochure are based on the "Architectural Method" of measurement which include portions of the exterior walls, interior columns and fifty percent of demising walls.

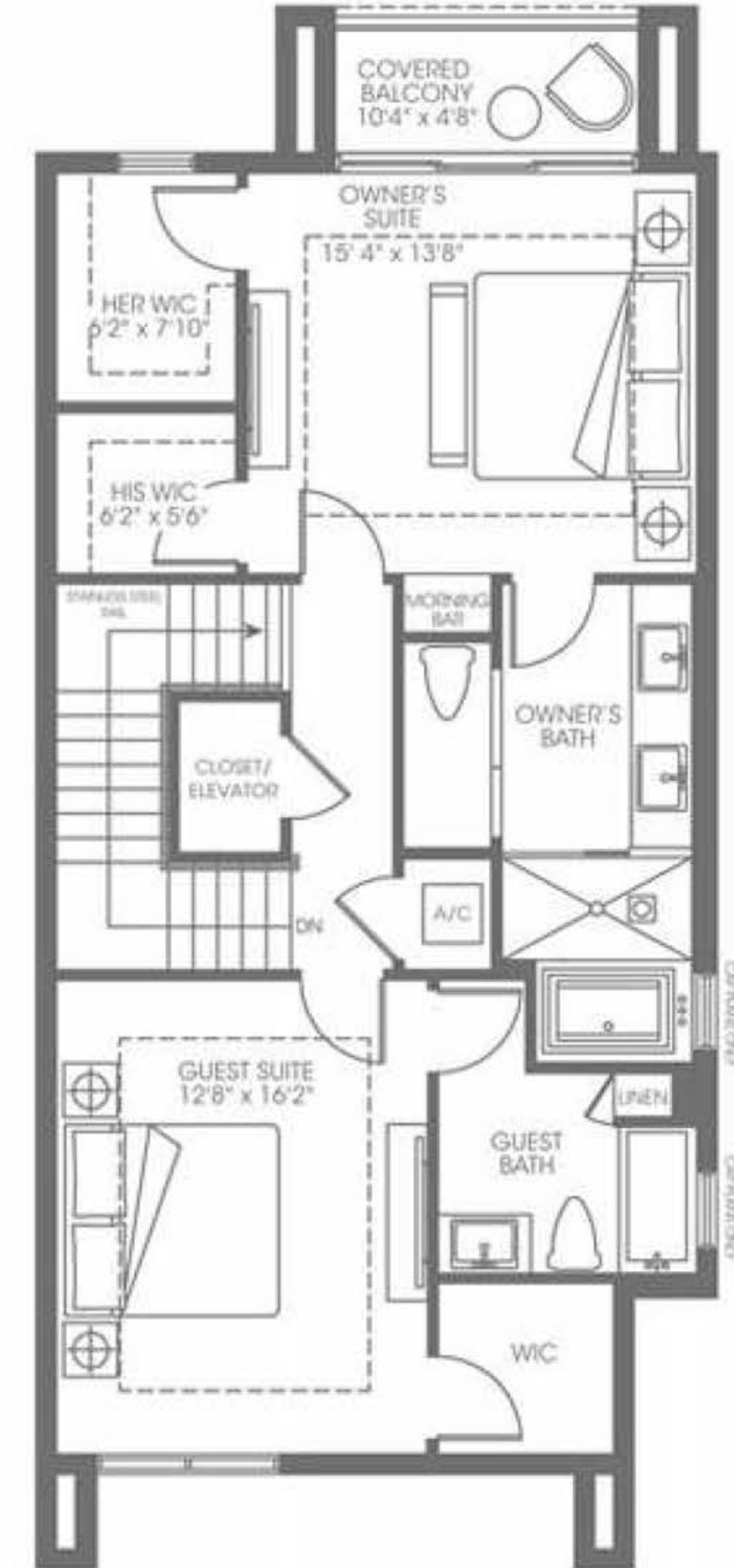
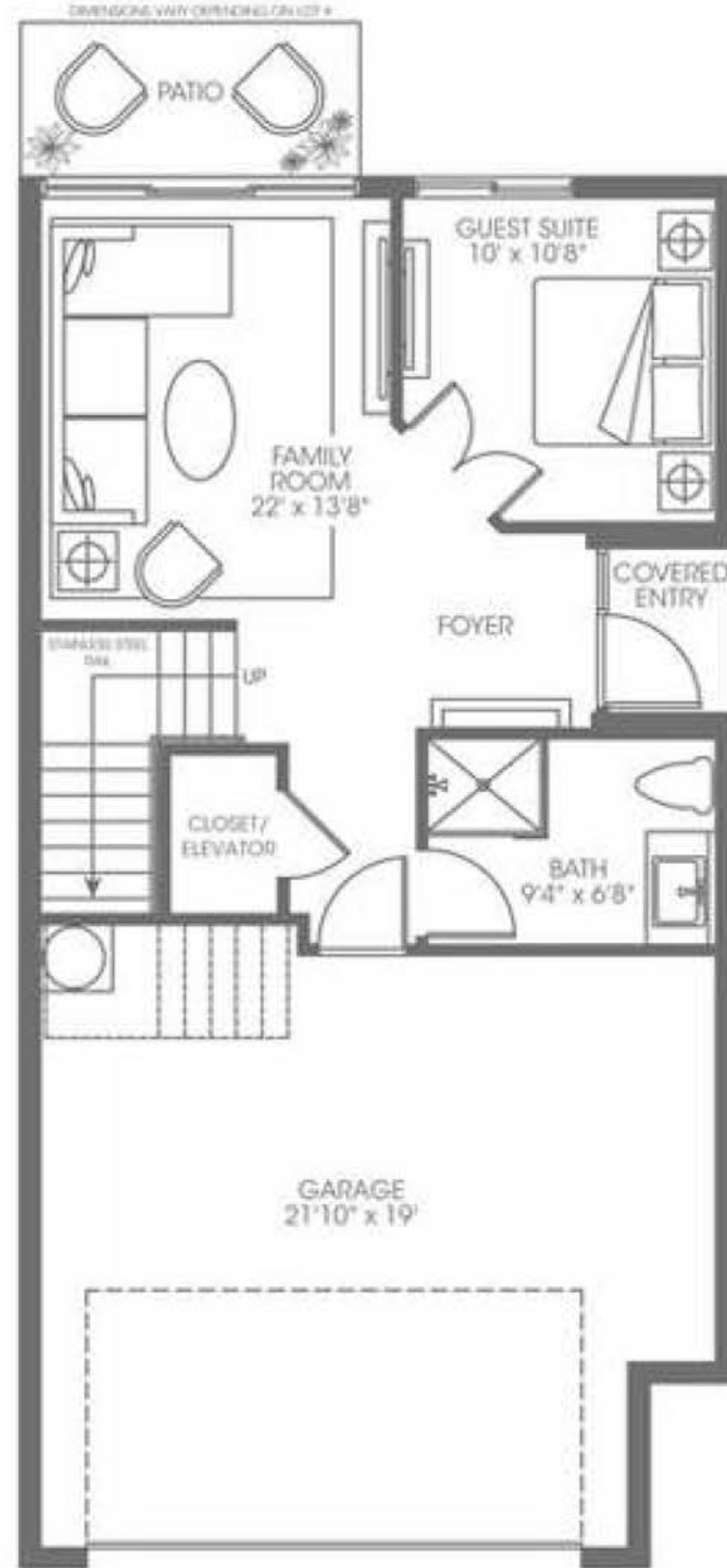


# PLAN TWO

2 Bedrooms | Den | Flex Space | 3.5 Baths

A/C Living Area		
Level 1	546 sf	51 m <sup>2</sup>
Level 2	1,011 sf	94 m <sup>2</sup>
Level 3	933 sf	87 m <sup>2</sup>
<b>Total Living Area</b>	<b>2,490 sf</b>	<b>231 m<sup>2</sup></b>

Covered Entry	21 sf	2 m <sup>2</sup>
Garage	443 sf	41 m <sup>2</sup>
Covered Patio	53 sf	5 m <sup>2</sup>
Balconies	144 sf	13 m <sup>2</sup>
<b>Total Area</b>	<b>3,151 sf</b>	<b>293 m<sup>2</sup></b>



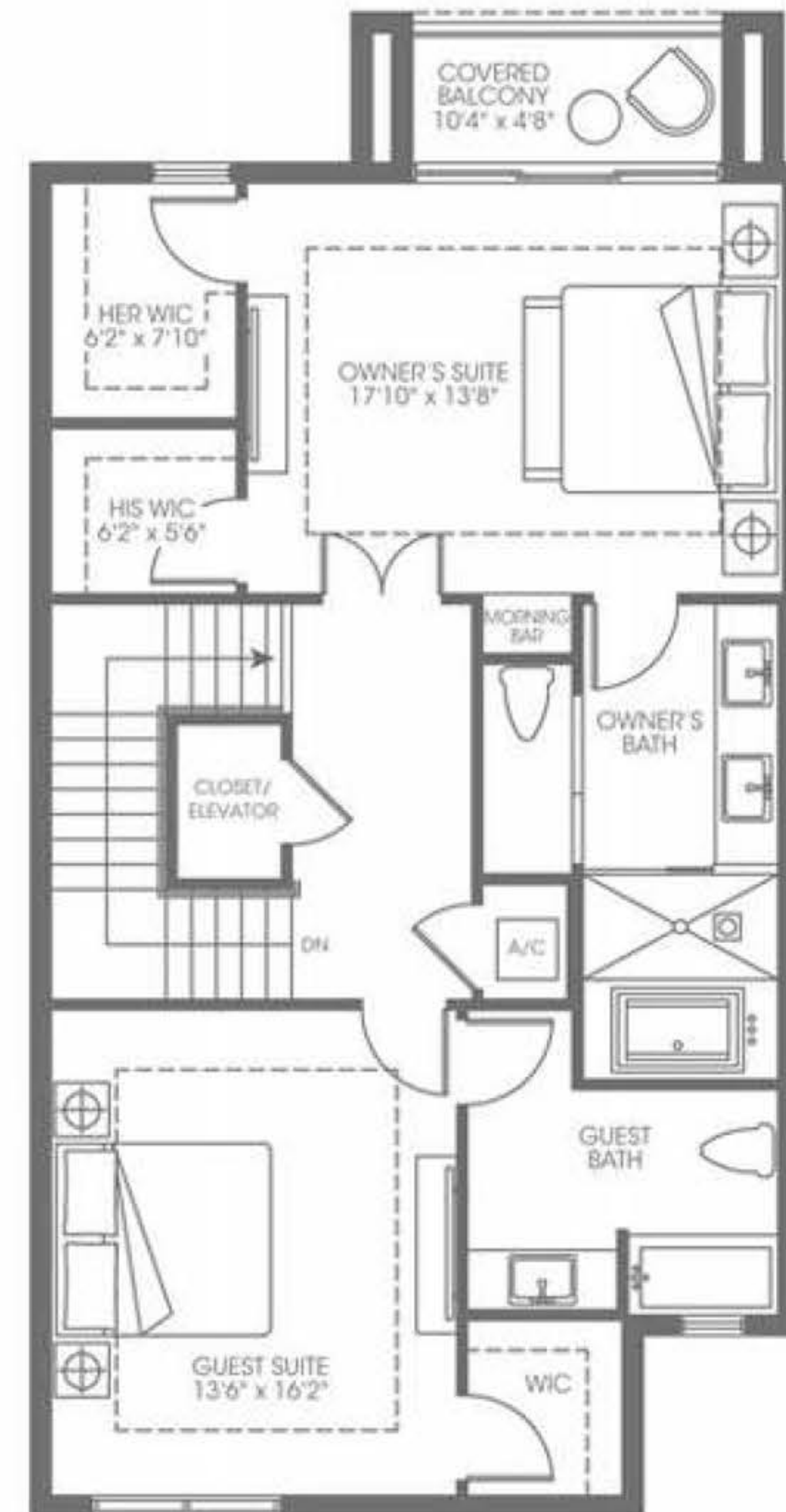
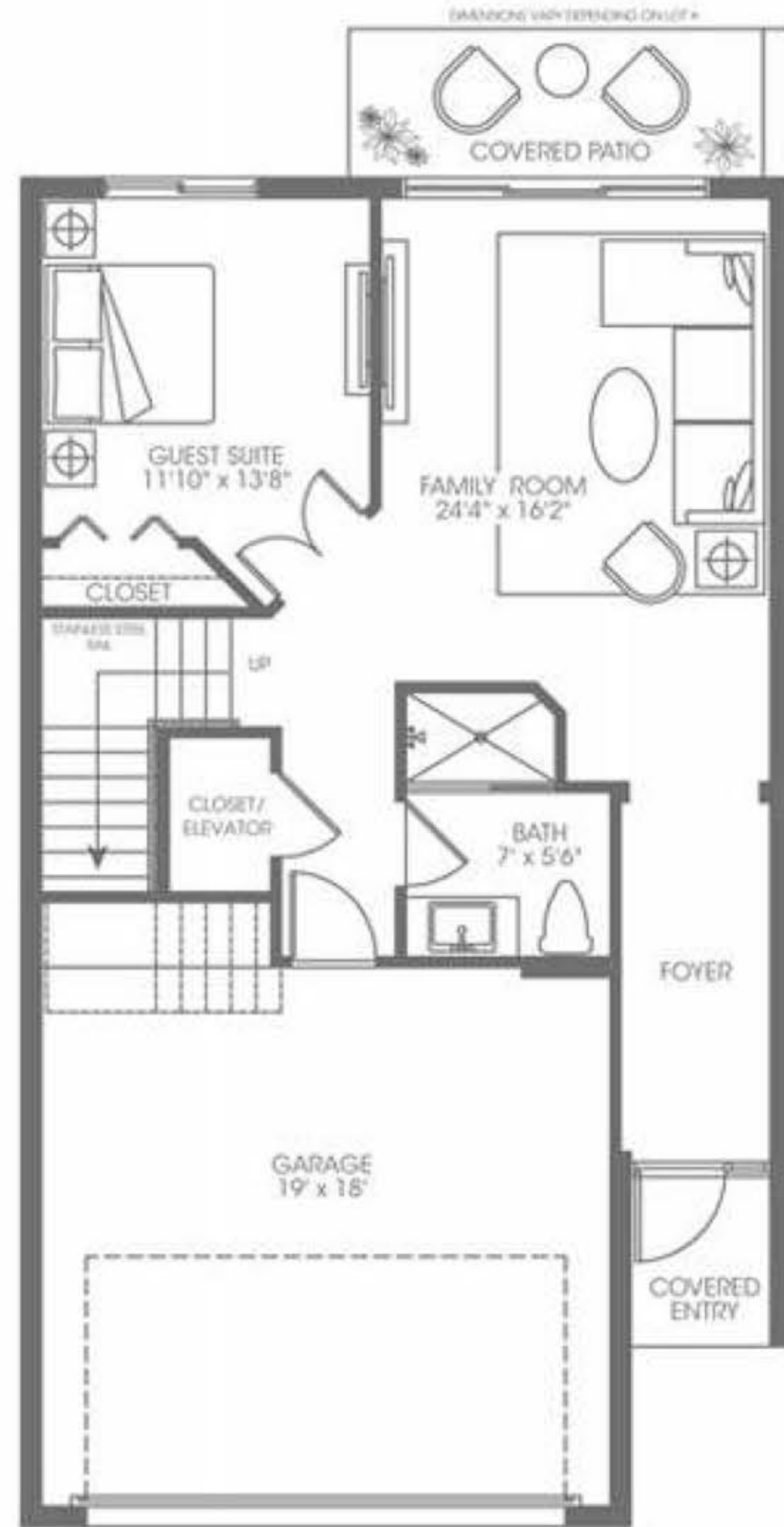
All dimensions are approximate. This floorplan is subject to change without notice. There are various methods of calculating the total square footage of a residence, and depending on the method of calculation, the quoted square footage of a residence may vary. The total square footages as shown in this brochure are based on the "Architectural Method" of measurement which include portions of the exterior walls, interior columns and fifty percent of demising walls.



# PLAN THREE

3 Bedrooms | Den | Family Room | 3.5 Baths

A/C Living Area			Covered Entry		
Level 1	682 sf	63 m <sup>2</sup>	Garage	385 sf	36 m <sup>2</sup>
Level 2	1,095 sf	102 m <sup>2</sup>	Covered Patio	72 sf	7 m <sup>2</sup>
Level 3	1,017 sf	94 m <sup>2</sup>	Balconies	144 sf	13 m <sup>2</sup>
<b>Total Living Area</b>	<b>2,794 sf</b>	<b>259 m<sup>2</sup></b>	<b>Total Area</b>	<b>3,433 sf</b>	<b>320 m<sup>2</sup></b>



All dimensions are approximate. This floorplan is subject to change without notice. There are various methods of calculating the total square footage of a residence, and depending on the method of calculation, the quoted square footage of a residence may vary. The total square footages as shown in this brochure are based on the "Architectural Method" of measurement which include portions of the exterior walls, interior columns and fifty percent of demising walls.

